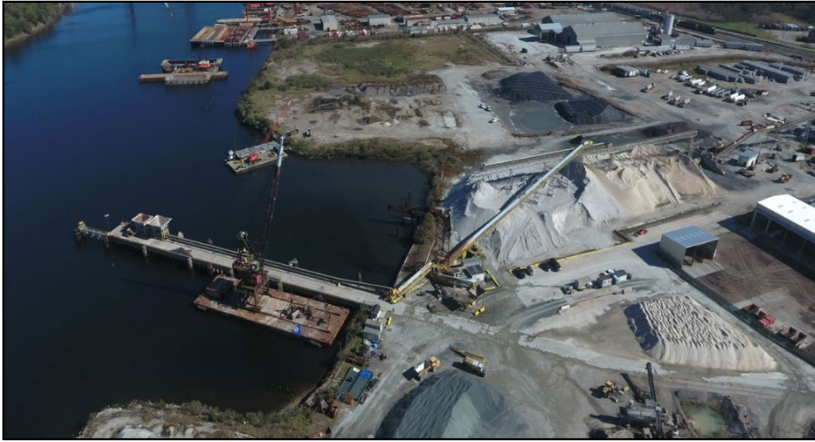


Money Point Terminal



Delivering Energy To Improve Lives And Create A Better World

Terminal Specifications

- ❑ 42 acres located on the Southern Branch of the Elizabeth River
- ❑ Approximately 30 acres of open storage

Commodities Handled

- ❑ Aggregates, sand, pumice, stone and other bulk

Access

- ❑ Marine service via two docks accessible by the Southern Branch of the Elizabeth River
 - One ship (32.6' MLW; restricted to geared or belted self-unloading vessels)
 - One barge (18' MLW; restricted to open hopper barges)
- ❑ Highway access from Interstates 64, 264, 664 and 464
- ❑ Rail access from Norfolk and Portsmouth Beltline RR with connectivity to NS and CSX (with expansion)

Terminal Services

- ❑ Loading and Unloading Services by Tank Truck
- ❑ Vessel / Barge Discharge to Storage
- ❑ Vessel / Barge Discharge to Truck

Major Features

- ❑ 30 Acres of Open Storage
- ❑ Conveyor System to / from Storage
- ❑ Rail Expansion Available
- ❑ Expansion for Truck Scales Available
- ❑ Land Available for Expansion and Development

Terminal Address

3900 Shannon Street
Chesapeake, VA 23324
757-543-0335



Business Address

1900 Harbor Access Road
Newport News, VA 23607
757-928-1500

Kinder Morgan provides energy transportation and storage services in a safe, efficient and environmentally responsible manner for the benefit of people, communities and businesses